

Quick Disconnect Coupling, Model : QDC



the right connection
the right environment

Ref. No : H03297, Release March 2018 (Dimensions in mm)

Description

Quick disconnect couplings are designed for applications where fast connection and disconnection of hydraulic lines is a need of the system.

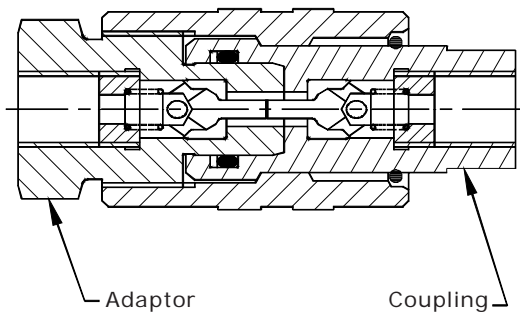
These coupling when connected offer unrestricted flow passage.

They are designed for reliable and safe operations by avoiding premature flow before the coupling is fully closed.



Section

(Self sealing Coupling, Self sealing Adaptor, Illustrated)



Hydraulic Symbol	Coupling Type
	Through type Adaptor AT Through type Coupling CT
	Self sealing Adaptor AS Through type Coupling CT
	Through type Adaptor AT Self sealing Coupling CS
	Self sealing Adaptor AS Self sealing Coupling CS

Unit Dimensions

End connections (Female)

BSP - G
Metric - M

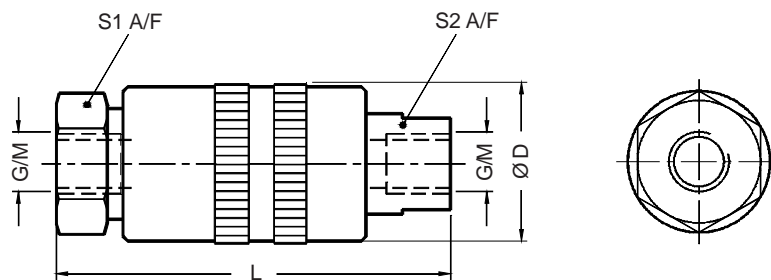
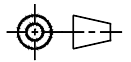


Table 1

Pressure (bar)	G	M	S1	S2	ØD	L
800	G 1/4	M14x1.5	27	19	35	86
800	G 3/8	M18x1.5	32	22	37	88
600	G 1/2	M22x1.5	41	30	46	116
500	G 3/4	M26x1.5	50	36	56	130
400	G1	M33x2.0	55	41	62	150

Quick Disconnect Coupling, Model : QDC



the right connection
the right environment

Ref. No : H03297, Release March 2018 (Dimensions in mm)

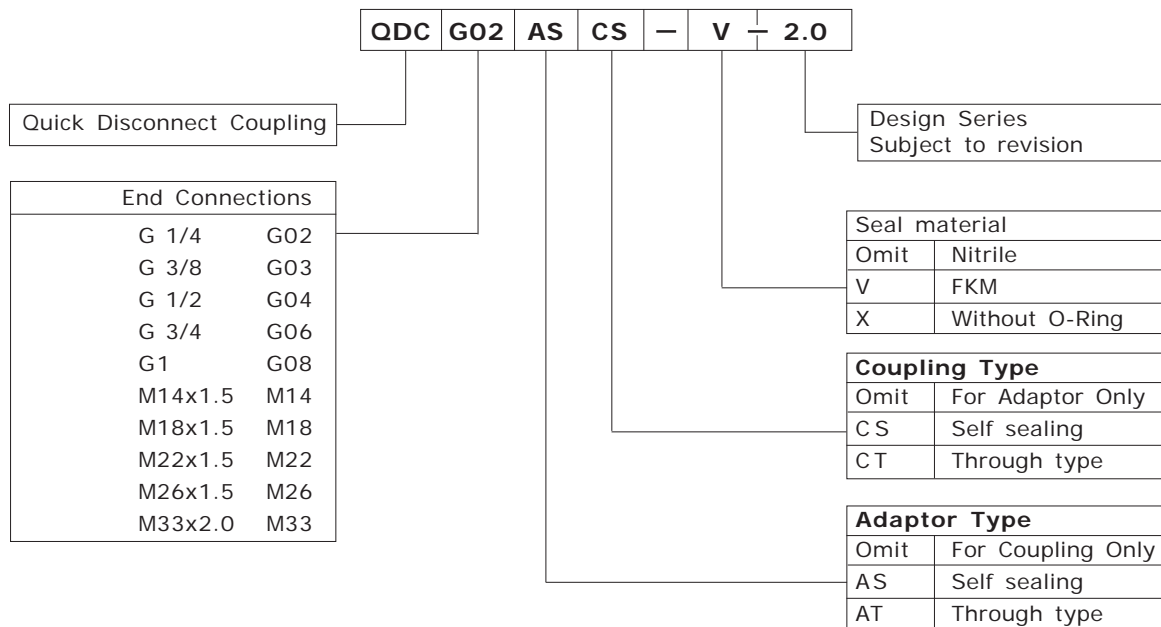
Technical Specifications

Construction Poppet type.
 Operating pressure Refer table no.1
 Hydraulic medium Mineral oil.
 Viscosity range 10 cSt to 380 cSt.
 Fluid temperature range -20 °C to +80 °C.
 Fluid cleanliness As per ISO code 19/16 or better
 Maximum flow handling capacity

M14 x 1.5	G 1/4
M18 x 1.5	G 3/8 - 30 lpm
M22 x 1.5	G 1/2
M26 x 1.5	G 3/4
M33 x 2.0	G 1

Caution : Pressure on the hydraulic lines must be relieved before they are connected/disconnected.

Ordering Code



Note : Add prefix 316 to the existing part code for SS 316 Quick disconnect couplings.

e.g. **316-QDCG02ASCS-2.0**